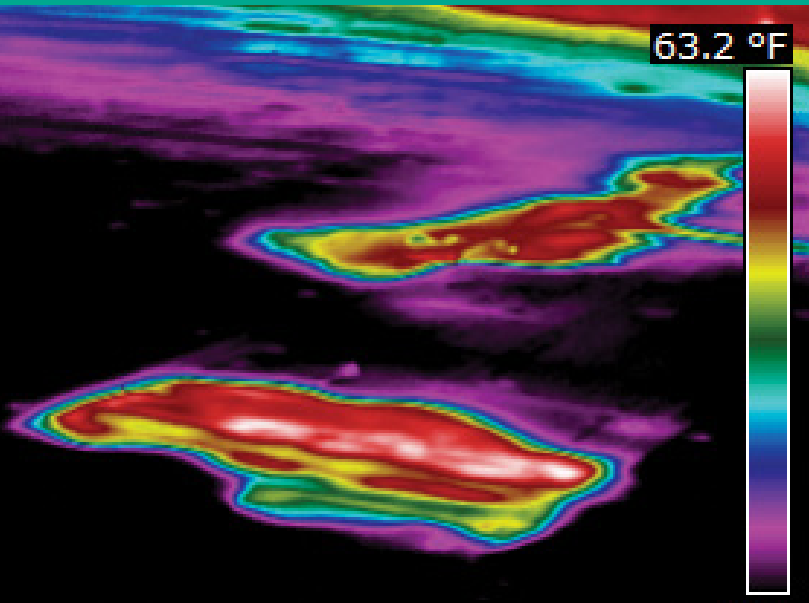


# Thermocore®

NON-DESTRUCTIVE MOISTURE DETECTION & ANALYSIS



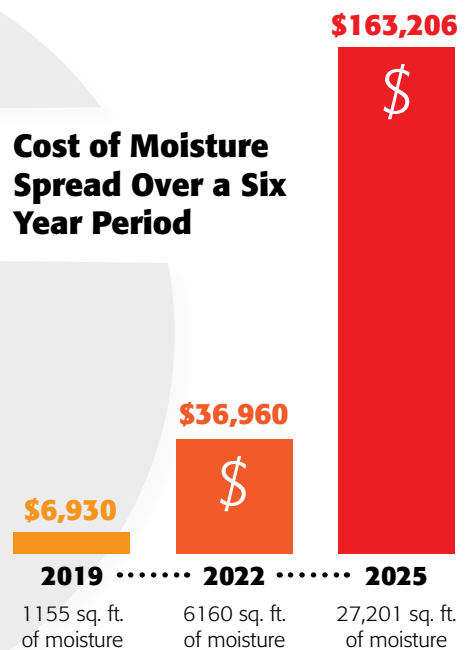
## IDENTIFY HIDDEN MOISTURE. AVOID UNNECESSARY COSTS.

Hidden moisture is your roof's worst enemy. It wastes energy, eats away at your roof deck, and contributes to sick building syndrome. Even worse, it spreads to more and more roof area over time. Catch it early, though, and you can stop it in its tracks with relatively inexpensive repairs.

### THE SCIENCE OF EARLY DETECTION

Based on the principle that wet roofing insulation conducts heat more rapidly than dry insulation, Thermocore was invented and patented for infrared moisture analysis. Using a sensitive infrared camera, trained WTI personnel non-destructively pinpoint the vulnerable areas where moisture has infiltrated the roof membrane and penetrated the insulation beneath.

### Cost of Moisture Spread Over a Six Year Period



# A Thermocore moisture analysis provides you with a detailed thermal map of how and where hidden moisture is threatening your roof.

You get the “early warning” data you need to head off big repairs and replacement bills.

## A FULL-SERVICE\* THERMOCORE MOISTURE ANALYSIS INCLUDES:

**Infrared roof moisture survey.** Every analysis starts with a visual inspection of the roof surface, including photos of roof details and construction. Then, we use a sensitive infrared scanner to detect temperature differentials across your entire roof area.

Our moisture surveys provide:

- Thermal mapping of every square foot of the roof to detect wet, defective areas
- Wet areas physically outlined for further analysis and possible removal
- Thermal images and scaled roof drawings to show precise size and location of wet areas

**Moisture probes to verify wet areas.** Once our skilled technicians have identified potentially wet roof sections, a moisture probe is inserted through the roof to measure electrical resistance, which varies according to the amount of moisture present.

### Verification through core sampling.

A proper moisture analysis program requires some level of physical testing, which measures the quantity of moisture at the core site and details of roof construction—identification and analysis of the deck, insulation, membrane and bitumen types. All roof cores are immediately repaired with quality Tremco materials to ensure waterproofing continuity.

### Detailed report to document the results.

Everything you need to understand the location and extent of moisture and what action you should take.

\*Alternate levels of service are available.



## THERMOCORE BENEFITS

- **Reduces life cycle costs** by helping you prevent the spread of moisture throughout the entire roof system, avoiding unnecessary tear-off.
- **Accurately identifies wet insulation** with minimal invasive testing of the roofing system.
- **Takes the guesswork out of roof analysis** by using scientific data and comprehensive reporting.
- **Enables you to customize** your level of service and establish a proactive management plan.
- **Inspected by THE industry leader** in roof diagnostic information and backed by ISO 9001:2015 quality processes and measurements.

*For large roofs and multi-building campuses, our SkyBEAM™ drone uses HD and infrared cameras to locate energy leaks, rooftop damage, deteriorating façades, safety issues and other potential problems.*

Learn more at <https://www.tremcoroofing.com/wti-and-services/skybeam-asset-mapping/>



Find your nearest Tremco Roofing sales representative at [tremcoroofing.com/find-a-rep](https://www.tremcoroofing.com/find-a-rep)

3735 Green Road | Beachwood, OH | 44122 | 800.852.6013  
220 Wicksteed Avenue | Toronto, ON | M4H 1G7 | 800.668.9879  
[tremcoroofing.com](https://www.tremcoroofing.com)



Weatherproofing Technologies, Inc. (WTI), part of Tremco Construction Products Group, offers a full range of sophisticated analytical, maintenance and information-based services with one simple goal – to maximize the life of your roof and protect the value of your building.

© 2022 Tremco Incorporated 7507