



# TREMLOCK®

## Metal Roof and Wall Systems



800.852.6013 | [tremcoroofing.com](https://tremcoroofing.com)







# TABLE OF CONTENTS



## Standing Seam Systems

TremLock T-138 and TremLock T-238 .....	4-5
TremLock T-138 and TremLock T-238 Recover .....	6-7
TremLock VP .....	8-9
TremLock SL .....	10-11
TremLock Trap T Panel .....	12
TremLock Narrow Batten & Narrow Batten II .....	12-13
TremLock LSP .....	14

## Flush & Soffit Panels

TremLock CP .....	15
TremLock Soffitt Panel & TremLock Flush Panels ...	15-16
TremLock Soffitt Panel .....	16
TremLock Flush Panel & Flush Panel II.....	16

## Concealed Fastener Panels

TremLock Flexx Panel .....	17-18
TremLock Board & Batten .....	18

## Exposed Fastener

TremLock "R" Panel .....	19-20
TremLock "R" Plus Panel .....	20
TremLock Mini-Rib Panel .....	20
TremLock Shadow Rib Panel .....	20
TremLock 7.2 Panel .....	21
TremLock "S" Panel and TremLock "M" Panel .....	21
TremLock Ultra-Rib Panel .....	22-23
TremLock Invisa-Lap Panel .....	23
TremLock 5V-Crimp .....	23
TremLock "U" Panel .....	23

<b>Retrofit Roofing Systems</b> .....	24-25
<b>Color Solutions</b> .....	26-27

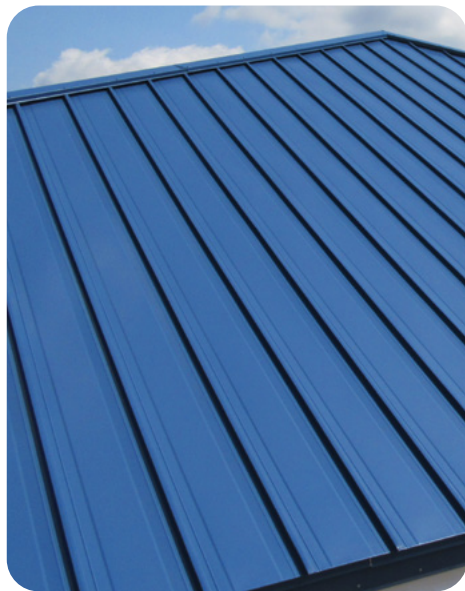
For the most current information, contact your Tremco Roofing Sales Representative and visit our website at:  
[www.tremcoroofing.com](http://www.tremcoroofing.com)



# STANDING SEAM SYSTEMS

## Jobsite Production Vehicles

Available for:  
• TremLock T-138 and TremLock T-238

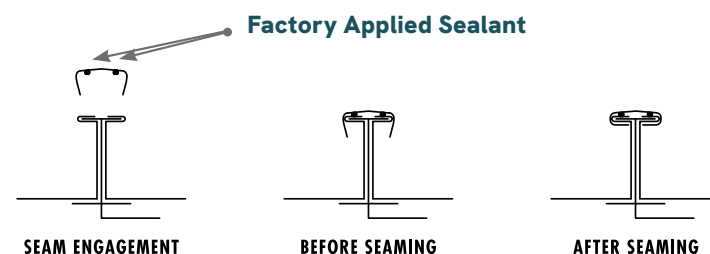


## TREMLOCK T-138 AND TREMLOCK T-238

TremLock T-138 and TremLock T-238 symmetrical standing seam systems offer many advantages over popular asymmetrical panels, including:

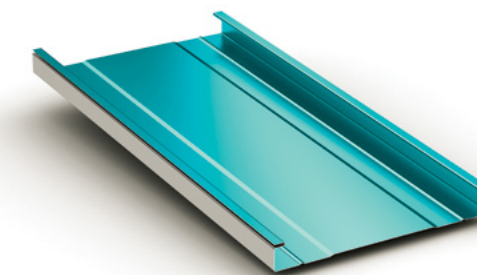
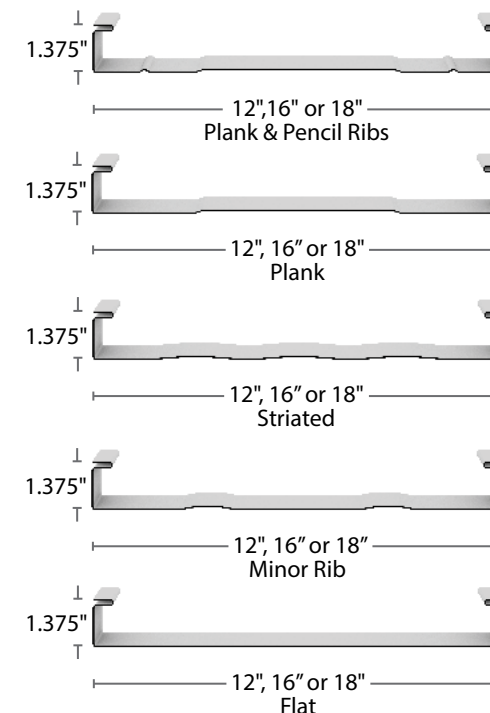
- Ease of installation
- Available flat, curved, and tapered
- Individual panel replacement
- Watertight seam design
- Can be jobsite formed for longer lengths
- No laps equals greater watertightness

Instead of having male and female seams, these panels have identical left and right seams; that are joined by a mechanically-seamed cap.



## TREMLOCK T-138 AND TREMLOCK T-238 PANEL

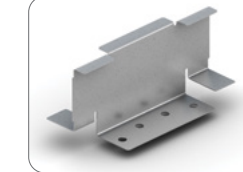
### TremLock T-138 Panel Options



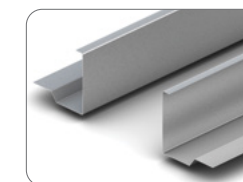
### TremLock T-138 Clip



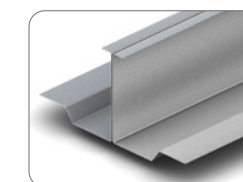
### TremLock T-238 Clip



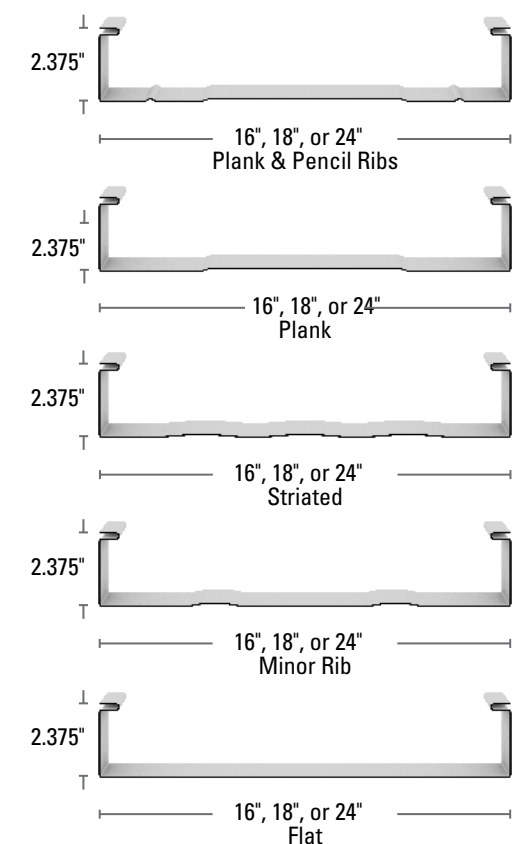
### TremLock T-138 and TremLock T-238 Two Piece Multi-Span Clip (TremLock T-238 Shown)



### TremLock T-138 and TremLock T-238 Two Piece Multi-Span Clip as Installed (TremLock T-238 Shown)



### TremLock T-238 Panel Options



### TremLock T-138 Details

- Mechanically seamed
- Minimum slope: 2:12
- Must be installed over solid deck
- Substrate:
  - Standard 24 gauge Galvalume®
  - Optional 22 gauge Galvalume
  - .032 and .040 aluminum
  - 20oz copper

#### Panel Options

- Width: 12", 16" and 18"
- Configurations: Flat, striated, plank and pencil ribs (plank and pencil ribs recommended)
- Coating: Kynar 500® (PVDF)
- Manufacturing: factory, jobsite roll-formed, curved on-site

#### Testing Data

- Fire Rating: UL Class A
- Uplift Test: UL580 Class 90, ASTM E1592
- Impact Resistance: UL Class 4

### TremLock T-238 Details

- Mechanically seamed
- Minimum slope: 1/2:12
- Can be installed over solid deck or open framing
- Galvalume
  - .032 and .040 aluminum
  - 20oz copper
- Manufacturing: factory, jobsite roll-formed, curved on-site

#### Panel Options

- Width: 16", 18", 24" (24" panel formed on-site only)
- Configurations: flat (16" and 18" only), striated, plank and pencil ribs, plank, minor ribs (plank and pencil ribs recommended)
- Coating: Kynar 500® (PVDF)
- Substrate:
  - Standard 24 gauge Galvalume®
  - Optional 22 gauge

#### Testing Data

- Fire Rating: UL Class A
- Uplift Test: UL580 Class 90, FM 4471, ASTM E1592
- Air and Water Infiltration: ASTM E1680, ASTM E1646
- Impact Resistance: UL Class 4, FM Class 1-SH
- Static Water: FM 4471 Appendix G, ASTM E2140
- Florida State Approval
- Miami Dade Approval

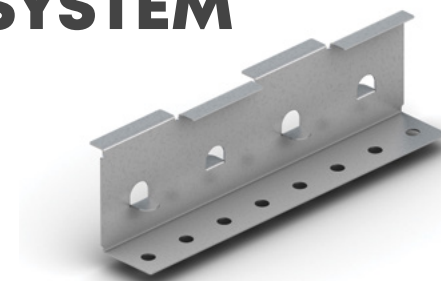
Oil canning (pan wave) is a natural occurrence in metal panels and is not a cause for panel rejection.



# STANDING SEAM RECOVER SYSTEMS



## TREMLOCK T-138 SHINGLE RECOVER SYSTEM



8" shingle recover clip with ASV

Featuring Tremco Roofing's TremLock T-138 symmetrical standing seam panel, this innovative system installs directly over existing shingles without tear-off or underlayment.

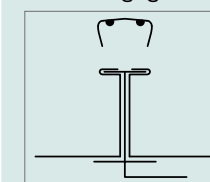
- Ease of installation
- Above sheathing ventilation (ASV - Utilizing air space to help reduce heat transfer and decrease energy expense)
- No tear off/disposal of existing roof
- No underlayment required
- Individual panel replaceability
- Decades long service life

*Note: 4" ASV clip for new construction or remove and replace.*

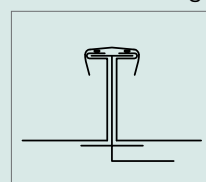
## TREMLOCK T-238 METAL-OVER-METAL SYSTEM

### Seaming

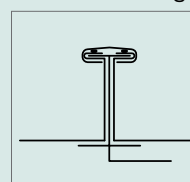
Seam Engagement



Before Seaming



After Seaming



The patented TremLock T-238 frameless metal-over-metal recover solutions provide low cost retrofit solutions over both existing exposed fastened and 3" tall trapezoidal standing seam systems.

- Two patented frameless recover systems
- Job site production enables eave to ridge panels
- Extremely high wind uplift capacity without additional edge zone or corner framing
- 24" wide panels reduce installation labor
- Individual panel removal and replacement
- Decades long service life



Corrugated sheeting installed at the ridge allows for continuous air flow between the existing and new roof while providing support for the panel and closure. Free flowing air space between a metal roof and shingles can reduce heat transfer.



The key to a proper installation of a standing seam recover over shingles is the patented shingle recover clip, which is long enough to sit on two shingles simultaneously.



Die-cut foam insulation is placed over the exiting roof panels and the TremLock T-238 panels are placed on top of the insulation. The TremLock T-238 panels are then joined together using TremLock T-238 caps and a mechanical seamer.



Single length panels save on labor and improve watertightness.



# STANDING SEAM SYSTEMS

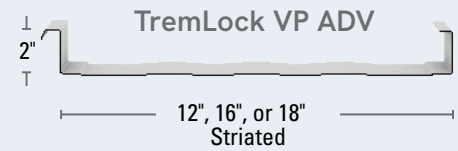
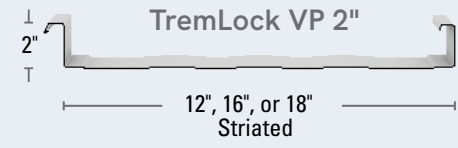
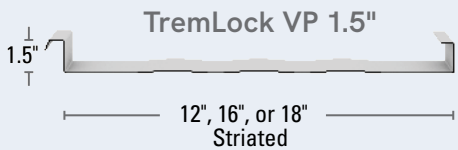
## Jobsite Production Vehicles

- Available for:
- TremLock VP 2"
  - TremLock VP ADV

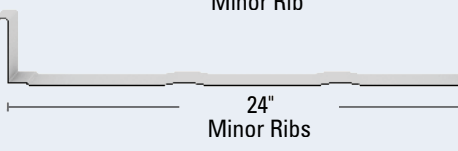
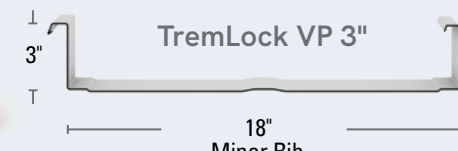
## TREMLOCK VP

Offering strength, durability and aesthetics, vertical leg standing seam systems are the industry's most popular roofing panel. To meet the varying needs of specifiers and contractors, Tremco Roofing's TremLock VP line offers the industry's broadest selection of vertical leg systems:

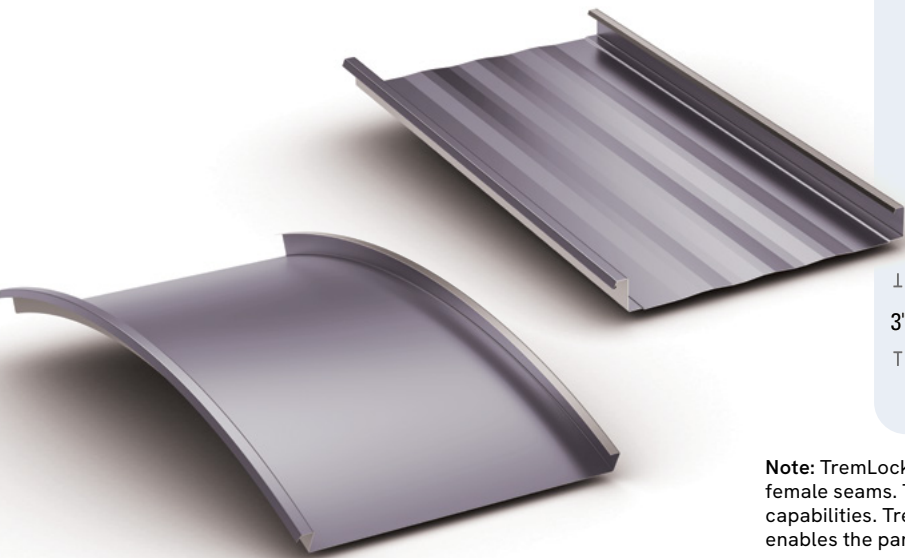
- Seam heights of 1.5", 2" and 3"
- Varying pan widths
- 90° and 180° seams
- Available flat or curved



Note: TremLock VP ADV also available without shoulders.



Note: TremLock VP 2" and 3" panels have a return leg on both the male and female seams. These return legs help create greater strength and uplift capabilities. TremLock VP 1.5" and ADV do not have the return legs, which enables the panels to be curved as well as seamed to 180 degrees.



## APPLICATIONS AND PROPERTIES

### TremLock VP PROFILES

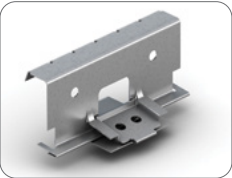
	WIDTH IN INCHES	PAN CONDITIONS					FACTORY NOTCHING				SEAM
		STRIATED	MINOR RIBS	SINGLE PENCIL RIB	DOUBLE PENCIL RIB	FLAT PAN	CURVED	LAP	EAVE	NONE	
TremLock VP 1.5"	12	✓	✓	✓	✓	✓	✓	✓	✓	✓	✓
TremLock VP 1.5"	16,18	✓	✓	✓	✓	✓	✓	✓	✓	✓	✓
TremLock VP 2"	12	✓	✓	✓	✓	✓	✓	✓	✓	✓	✓
TremLock VP 2"	16,18	✓	✓	✓	✓	✓	✓	✓	✓	✓	✓
TremLock VP ADV 2"	12	✓	✓	✓	✓	✓	✓	✓	✓	✓	✓
TremLock VP ADV 2"	16,18	✓	✓	✓	✓	✓	✓	✓	✓	✓	✓
TremLock VP 3" Minor Rib (Std.) 18" panel only available with one minor rib	18,24	✓	✓	✓	✓	✓	✓	✓	✓	✓	✓

Striated panels are recommended as they reduce the appearance of oil canning (pan wave).

### Curving Details

- Only TremLock VP 1.5" and TremLock VP ADV can be curved
- Minimum radius: 25' for 2" ADV 12' for 1.5"
- Sealant to be field applied on curved applications
- TremLock VP ADV and TremLock VP 1.5" flat panels will curve naturally on a radius of 250 feet or greater

2:16 Low Floating Clip



TremLock VP Before Seaming



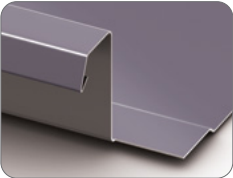
TremLock VP 90° Fold



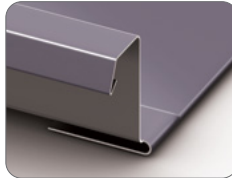
TremLock VP ADV and TremLock VP 1.5" 180° Fold



Factory Formed Eave Notch



Eave Notch Folded In Field



Note: Patented Floating Clips allow for 3 1/8" of thermal movement

### Details

- Mechanically seamed profile
- Factory applied sealant (on non-curved panels only)
- Minimum slope: 1:12 for 1.5"
- Minimum slope: 1/2:12 for 2"
- Minimum slope: 1/4:12 for 3"
- Can be installed over solid deck or open framing
- TremLock VP 2" and ADV also available jobsite formed for long lengths

### Panel Options

- Height and width: See panel profile drawings above
- Configurations: See chart on left
- Coating: Kynar 500® (PVDF)
- Substrate:
  - Standard 24 gauge Galvalume®
  - Optional 22 gauge Galvalume
  - .032 and .040 aluminum (Aluminum is produced at the Sunnyvale, TX facility only. No testing available on aluminum)

### Testing Data

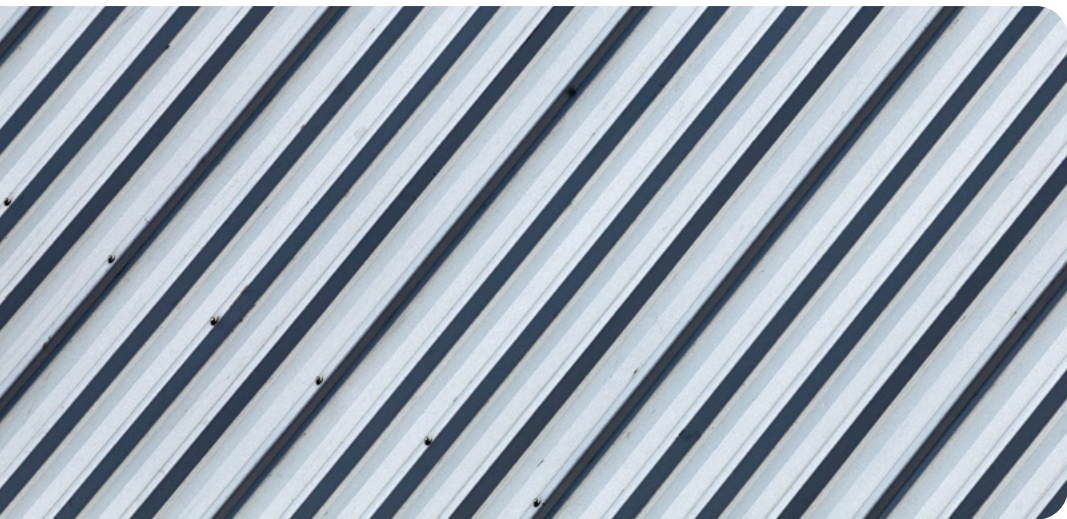
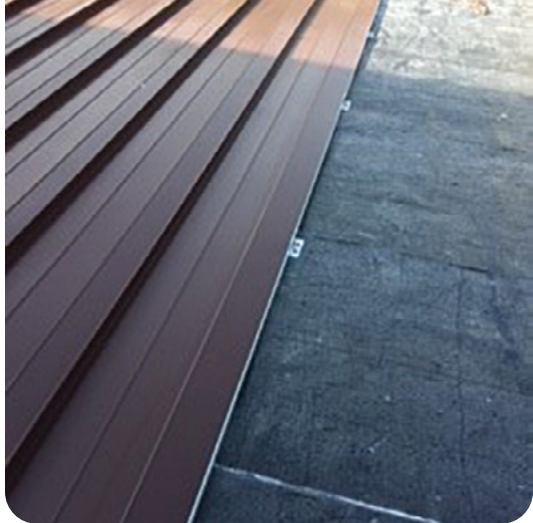
- Fire Rating: Class A
- Uplift Test: UL580 Class 90 FM 4471 for 2" only (1-90 Rated) ASTM E1592 for 1.5", 2" and 3"
- Air Infiltration: ASTM E1680 (1.5", 2" and 3")
- Water Infiltration: ASTM E1646 (1.5", 2" and 3")

- Class 4 Impact Resistance: UL 2218
- Florida State Approval
- Fire Resistance: UL 263 (2" and 3")
- Miami-Dade Approval
- All testing conducted with Galvalume substrate

Oil canning (pan wave) is a natural occurrence in metal panels and is not a cause for panel rejection.

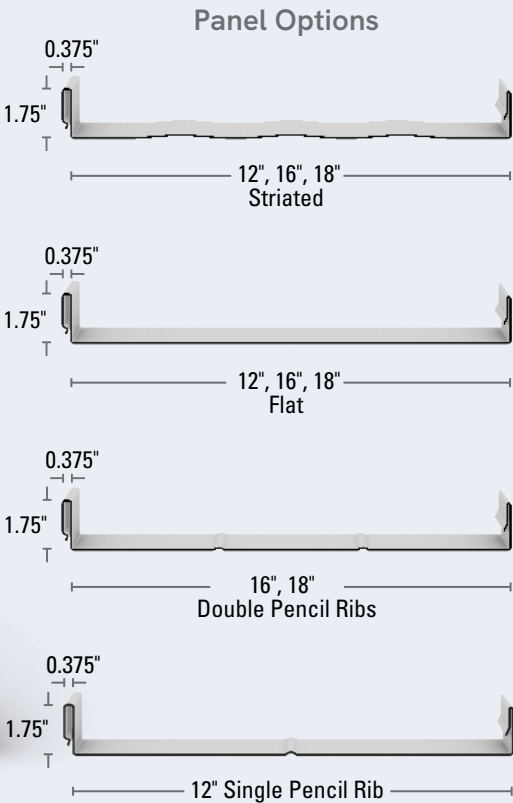


# STANDING SEAM SYSTEMS



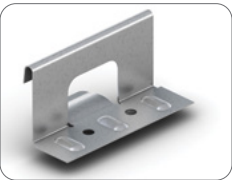
## TREMLOCK SL

TremLock SL is a snap-together architectural panel with structural capabilities that features a rigid 1.75" standing seam. TremLock SL is one of the most popular snap-together panels and has been utilized to add beauty and function on projects all across the country.



**Note:** Striated panels are recommended as they reduce the appearance of oil canning

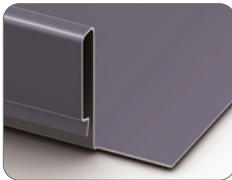
UL 90 Clip



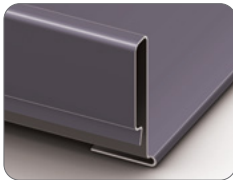
Seam Detail



Factory Eave Notch



Eave Notch Folded In Field



### Details

- Factory formed eave notch upon request
- Factory-applied sealant
- Minimum slope: 3:12
- Can be installed over solid deck or open framing

### Panel Options

- Width: 12", 16" and 18"
- Configurations: striated, ribbed or flat pan (striated recommended)
- Coating: Kynar 500® (PVDF)
- Substrate:
  - Standard 24 gauge Galvalume®
  - Optional 22 gauge Galvalume
  - .032 and .040 aluminum

### Testing Data

- Fire Rating: Class A
- Uplift Test: UL580 Class 90 ASTM E1592
- Air Infiltration: ASTM E1680
- Water Infiltration: ASTM E1646
- Class 4 Impact Resistance: UL 2218
- Florida State Approval
- Fire Resistance UL 263
- Miami Dade Approval

*Oil canning (pan wave) is a natural occurrence in metal panels and is not a cause for panel rejection.*



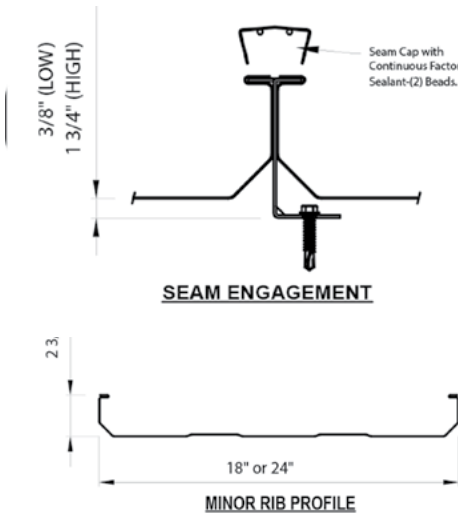
# STANDING SEAM SYSTEMS



## TREMLOCK TRAP T PANEL

Tremco's 2 3/4" tall symmetrical Trap-Tee system is a site-formed, mechanically seamed system designed to resolve the three major shortcomings of trapezoidal standing seam roof systems: leaking endlaps, low wind uplift capacity, and difficult to repair.

- 2 3/4" tall mechanically seamed Symmetrical Trapezoidal panel
- 1/4:12 minimum roof slope
- Individual panel replaceability



### Details

- Installs over open framing or solid deck
- Best suited for simple sloped roofs without dormers, hips, valleys or other special conditions • Single-piece panels up to 250' long
- No lap conditions = Improved weathertightness
- Bi-directional seamer
- Seam cap has 2 beads of continuous factory applied sealant

### Panel Options

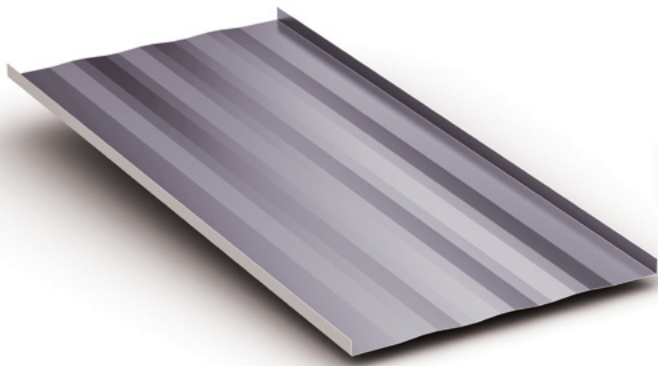
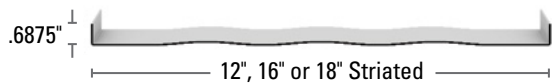
- Standard 24 Ga Galvalume
- Options 22 & 20 Ga Galvalume
- Coating: Kynar 500® (PVDF)

### Testing Data

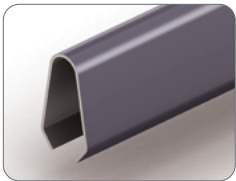
- ASTM E1592 (Pending)
- ASTM 1680
- ASTM 2140 (Pending)
- ASTM 1646 (Pending)

## TREMLOCK NARROW BATTEN

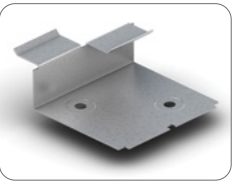
TremLock Narrow Batten is an architectural standing seam system featuring a narrow batten cap applied over roofing panels and concealed clips. TremLock Narrow Batten is installed over solid deck and can also be curved to meet radius panel specifications.



TremLock Narrow Batten Batten



TremLock Narrow Batten Clip



### Details

- Minimum slope: 3:12
- Must be installed over solid deck

### Curving Details

- Minimum radius: 30"

### Panel Options

- Width: 12", 16" and 18"
- Configurations: striated (recommended), ribbed, or flat pan
- Coating: Kynar 500® (PVDF)
- Substrate:
  - Standard 24 gauge Galvalume®

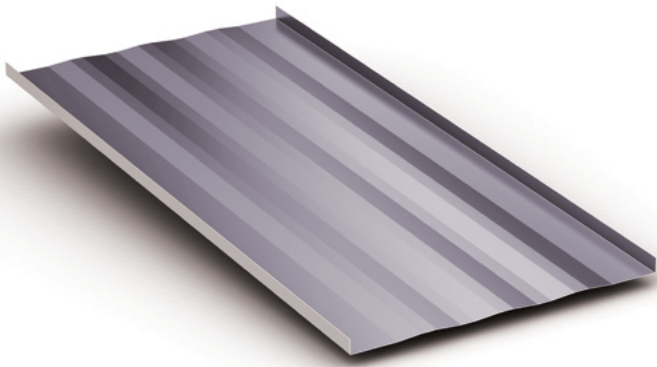
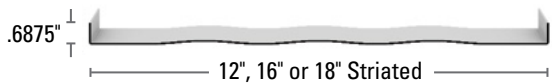
### Testing Data

- Fire Rating: Class A
- Uplift Test: UL580 Class 90
- Air Infiltration: ASTM E1680
- Water Infiltration: ASTM E1646
- Class 4 Impact Resistance: UL 2218
- Florida State Approval
- Fire Resistance: UL 263
- All testing conducted with Galvalume substrate

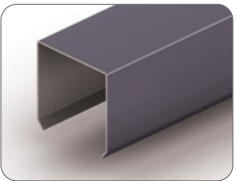
*Oil canning (pan wave) is a natural occurrence in metal panels and is not a cause for panel rejection.*

## TREMLOCK NARROW BATTEN II

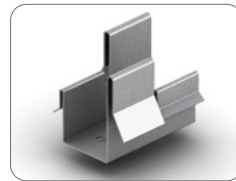
TremLock Narrow Batten II is an architectural standing seam system that features a 1 1/2" wide batten cap applied over roofing panels and concealed clips. TremLock Narrow Batten II is installed over solid deck.



TremLock Narrow Batten II Batten



TremLock Narrow Batten II Clip



### Details

- Minimum slope: 3:12
- Must be installed over solid deck

### Panel Options

- Width: 12", 16" and 18"
- Configurations: striated (recommended), ribbed, or flat pan
- Coating: Kynar 500® (PVDF)
- Substrate:
  - Standard 24 gauge Galvalume

### Testing Data

- Fire Rating: Class A
- Uplift Test: UL580 Class 90
- Air Infiltration: ASTM E1680
- Water Infiltration: ASTM E1646
- Class 4 Impact Resistance: UL 2218
- Florida State Approval
- Fire Resistance: UL263

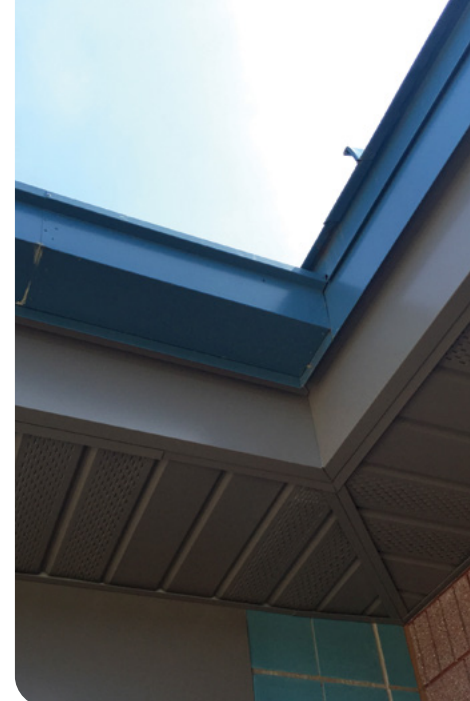
*Oil canning (pan wave) is a natural occurrence in metal panels and is not a cause for panel rejection.*



# STANDING SEAM SYSTEMS

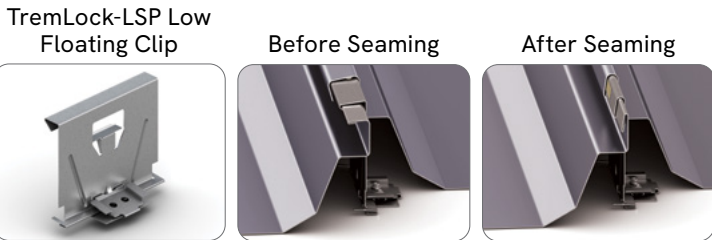


# FLUSH AND SOFFIT PANEL

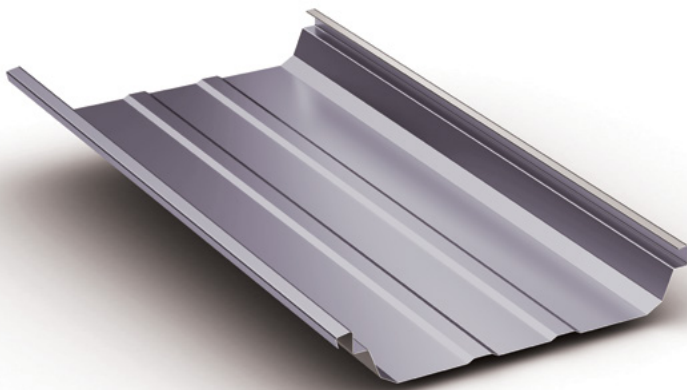


## TREMLOCK-LSP

TremLock-LSP is a mechanically seamed trapezoidal standing seam system designed for projects with slopes as low as 1/4:12. TremLock-LSP is best suited for simple sloped roofs without dormers, hips, valleys or other special conditions and can be installed over solid deck or substructural members.



Other floating clips available



### TremLock-LSP Details

- Mechanically seamed profile
- Factory applied sealant in seam to improve weather-tightness
- Minimum slope: 1/4:12
- Can be installed over solid deck or open framing

### Panel Options

- Width: 24"
- Coating: Kynar 500® (PVDF)
- Substrate:
  - Standard 24 gauge Galvalume
  - Optional 22 gauge Galvalume

### Testing Data

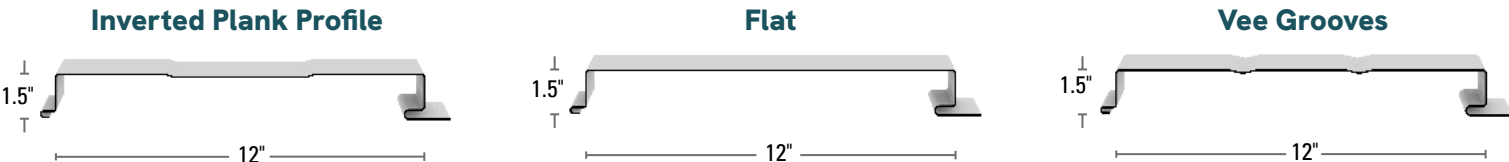
- Fire Rating: Class A
- Uplift Test: UL580 Class 90 ASTM E1592
- Air Infiltration: ASTM E1680
- Water Infiltration: ASTM E1646
- Class 4 Impact Resistance: UL 2218
- Florida State Approval

*Oil canning (pan wave) is a natural occurrence in metal panels and is not a cause for panel rejection.*

## TREMLOCK RF PANEL

TremLock RF Panel is a 1.5" deep flush metal panel designed for usage in vertical applications. Available options include deep vee grooves, reveal 1/2" up to 3" in 1/2" increments, or a traditional smooth appearance. Regardless of the pattern, the 1.5" depth and tongue-and-groove engagement remain the same.

### Reveal Options



### Details

- Maximum lengths:
  - 24 gauge 2' minimum and 8' maximum
  - 22 gauge 2' minimum and 15' maximum

### Panel Options

- Width: 12"
- Height: 1 1/2"
- Configurations: inverted plank, flat, vee grooves

### Reveal Options:

- 1/2" up to 3" reveal in 1/2" increments for 12" panel

### Coating: Kynar 500® (PVDF)

- Substrate:
  - Standard 24 gauge Galvalume®
  - Optional 22 gauge Galvalume

### Testing Data

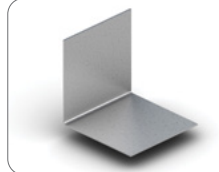
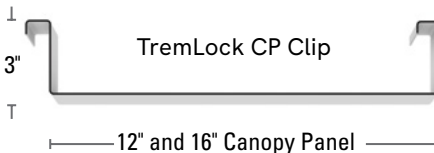
- RF: ASTM E1592
- RF Reveal: No testing

*Oil canning (pan wave) is a natural occurrence in metal panels and is not a cause for panel rejection.*

TremLock RF panel is produced in Houston, TX.

## TREMLOCK CP

TremLock CP Panel is a concealed fastener panel designed to meet the demands of canopy installations. Banks, drive-thru restaurants, convenience stores or any other building type requiring attractive and functional canopy systems are an excellent application for TremLock CP.



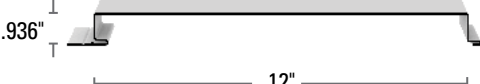
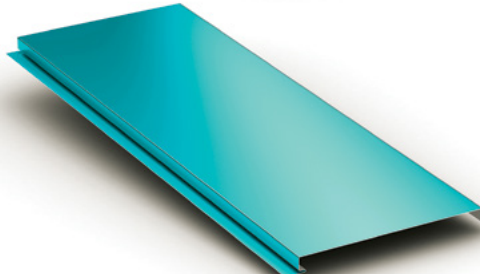
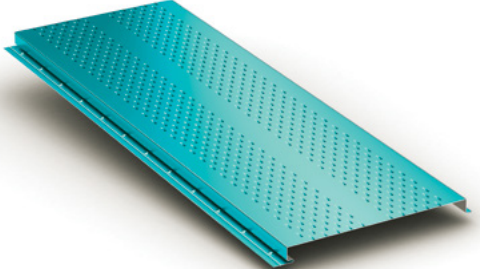
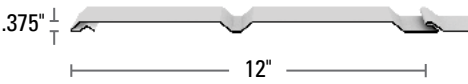
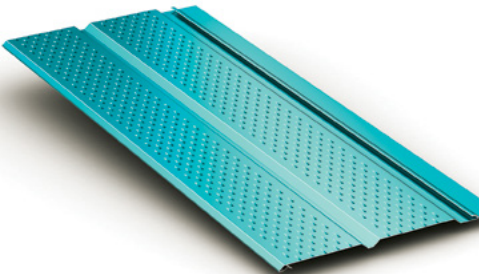
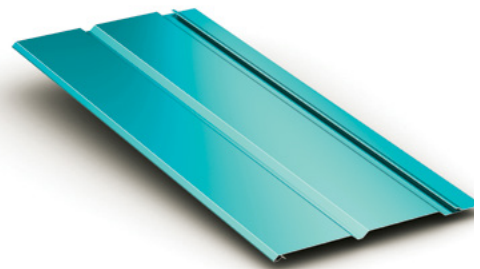


# TREMLOCK SOFFIT PANEL

TremLock Soffit Panel will add an elegant touch to any commercial or residential project. These panels are easy to install and available in 11.5" and 23.5" lengths, to minimize onsite labor.

# TREMLOCK FLUSH PANEL AND TREMLOCK FLUSH PANEL II

TremLock Flush Panel and TremLock Flush Panel II are soffit and fascia panels that are coated in colors matching TremLock’s standing seam systems. This assures an exact color match between roof system, soffit, fascia and wall panels. TremLock’s Flush Panels features a unique locking design that adds strength and helps to prevent the panels from unlatching due to high suction force during a wind incident. No other panel in the industry features this type of locking mechanism.



- Details**
  - Stocked lengths: 11.5" and 23.5"
  - 10% net free area with vented surface

**Panel Options**
  - Width: only available in 12"
  - Configurations: non-vented or vented
- Coating: Kynar 500® (PVDF)
  - Substrate:
    - Standard 29 gauge Galvalume®
    - Optional 24 gauge Galvalume
- Testing Data**
  - Uplift Test: ASTM E1592

Oil canning (pan wave) is a natural occurrence in metal panels and is not a cause for panel rejection.

- Details**
  - TremLock Flush Panel - 8% net free area with vented surface
  - TremLock Flush Panel II - 2% net free area with vented surface
  - Maximum lengths:
    - 24 gauge 3' minimum and 8' maximum
    - 22 gauge 3' minimum and 15' maximum
- Testing Data**
  - Uplift Test: ASTM E1592 (TremLock Flush Panel with locking feature only)
- Panel Options**
  - Width: 12"
- TremLock Flush Panel I configurations:
    - Non-vented: flat or double pencil ribs (on-center spacing with double pencil ribs is 4")
    - Vented: flat or single pencil rib
  - TremLock Flush Panel II configurations:
    - Non-vented: flat or double pencil ribs
    - Vented: flat or single pencil ribs (vented available in 24 gauge only)
  - Coating: Kynar 500® (PVDF)
  - Substrate:
    - Standard 22 gauge Galvalume
    - Optional 24 gauge Galvalume

Oil canning (pan wave) is a natural occurrence in metal panels and is not a cause for panel rejection.

TremLock Flush Panel II is produced in Adelanto, CA.

# CONCEALED FASTENER WALL PANELS



## Pre-Notched TremLock Flexx Panel Flashing

TremLock Flexx Panel pre-notched transition flashings allow for thermal expansion and contraction while providing an attractive finishing detail. Also available, TremLock Flexx Panel's pre-notched corner flashing.

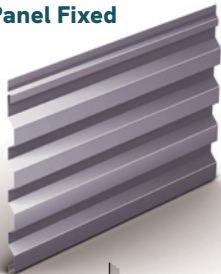




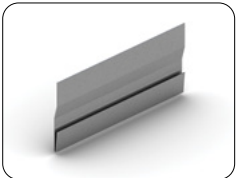
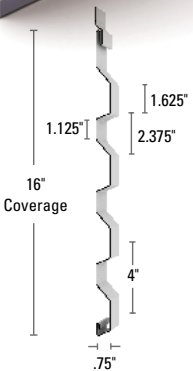
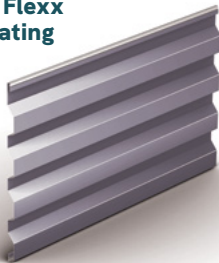
# TREMLOCK FLEXX PANEL

Available in both fixed and floating systems, Tremco Roofing's TremLock Flexx Panels are concealed fastener wall panels that can be installed vertically or horizontally over solid substrate or subframing. TremLock Flexx Panel Fixed is installed with an integral fastening flange, which is roll formed into the panel during the manufacturing process and can be utilized for panel lengths of 40' or less. TremLock Flexx Panel Floating panels utilize separate clips and should be specified for panel lengths of 40' or greater.

TremLock Flexx Panel Fixed



TremLock Flexx Panel Floating



TremLock Flexx Panel Floating Clip

### Details

- Concealed fastener wall panel
- Typically installed horizontally, but can be installed vertically
- TremLock Flexx Panel Fixed used for panel lengths 40' or less
- TremLock Flexx Panel Fixed has a concealed fastening flange
- TremLock Flexx Panel Floating used for panel lengths greater than 40'
- TremLock Flexx Panel Floating utilizes a clip

### Panel Options

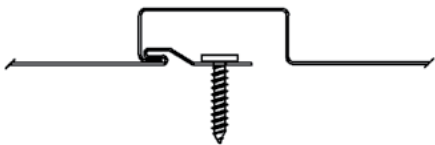
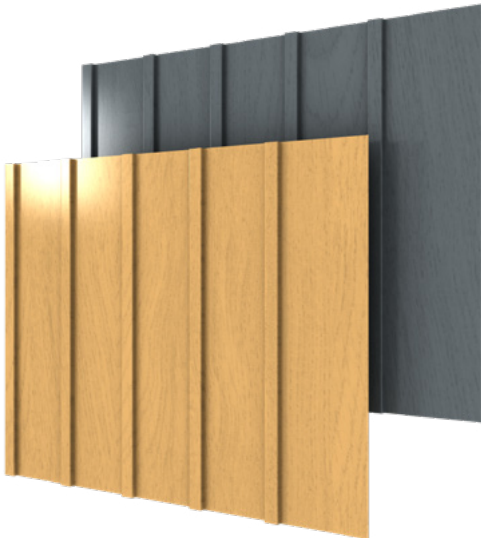
- Width: 16"
- Coating: Kynar 500® (PVDF)
- Substrate: Standard 24 Gauge Galvalume®  
Optional 22 gauge Galvalume

### Testing Data

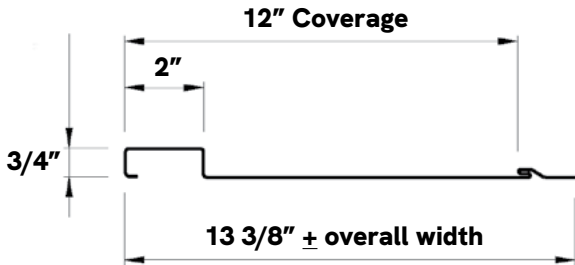
- Uplift Test: ASTM E1592

# TREMLOCK BOARD AND BATTEN

The TremLock Board & Batten concealed fastener siding system offers the time-honored look of wood siding without the hassle of ongoing maintenance.



NOSTALGIA BOARD and BATTEN SEAM



### Details

- Architectural design
- Nostalgic look

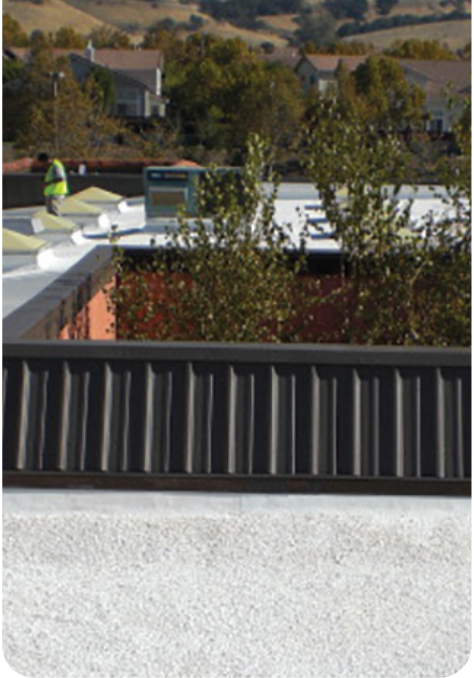
### Panel Options

- Standard 24 Ga Galvalume
- Coating: Kynar 500® (PVDF)

### Testing Data

- ASTM E1592 (Pending)
- ASTM E283
- ASTM E331 (Pending)

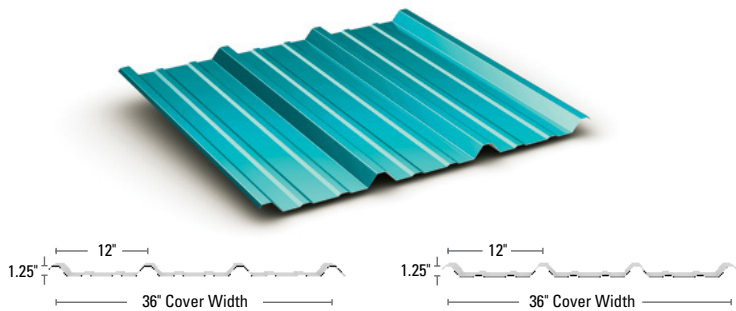
# EXPOSED FASTENER PANELS





# TREMLOCK "R" PANEL

TremLock "R" Panel is a multi-use roof and wall panel used primarily in pre-engineered metal building applications.



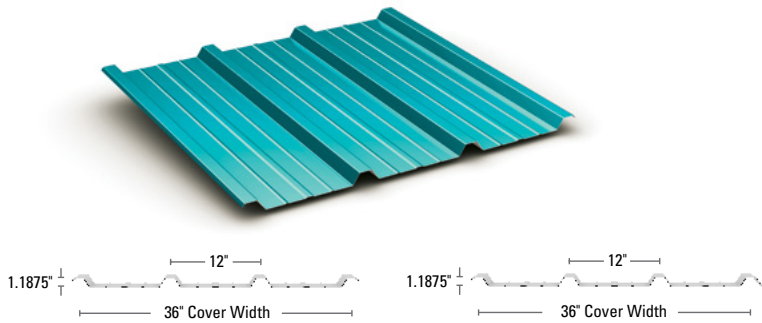
**Details**

- Minimum slope: 1:12 (with sealant)
- Air Infiltration: ASTM E1680
- Water Infiltration: ASTM E1646
- Class 4 Impact Resistance: UL 2218
- Florida State Approval
- Fire Rating: Class A
- Fire Resistance: UL263
- Uplift Test: UL580 Class 90, ASTM E1592 (26 PBR)
- Miami Dade Approval

**Testing Data**

# TREMLOCK "R" PLUS PANEL

TremLock "R" Plus Panel is a multi-use roof and wall panel used primarily in pre-engineered metal building applications.



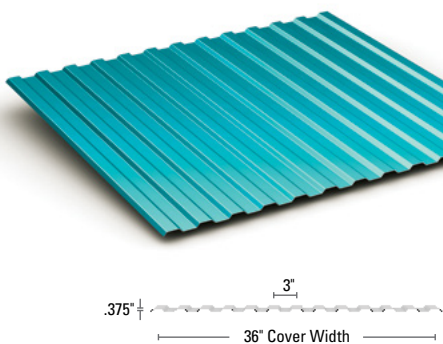
**Details**

- Minimum slope: 1:12 (with sealant)
- Uplift Test: UL580 Class 90, ASTM E1592 (26 PBR)
- Air Infiltration: ASTM E1680
- Water Infiltration: ASTM E1646
- Class 4 Impact Resistance: UL 2218
- Florida State Approval
- Also available with Moisture-Lok
- Fire Rating: Class A

**Testing Data**

# TREMLOCK MINI-RIB PANEL

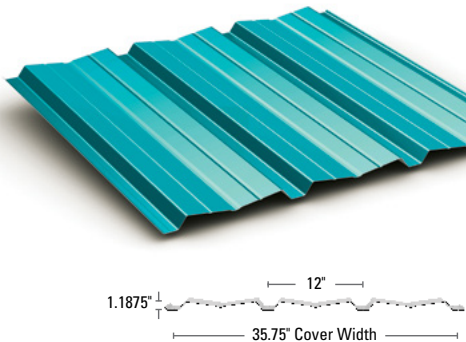
The symmetrical design of TremLock's Mini-Rib Panel makes it an appealing profile for wall, soffit, liner, and fascia applications.



TremLock Mini-Rib Panel is produced in Bossier City, LA.

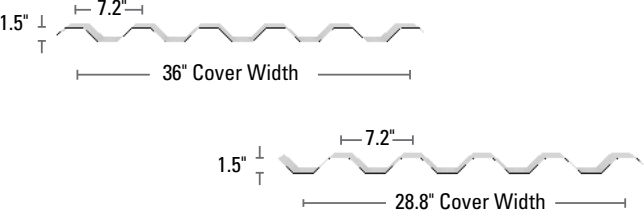
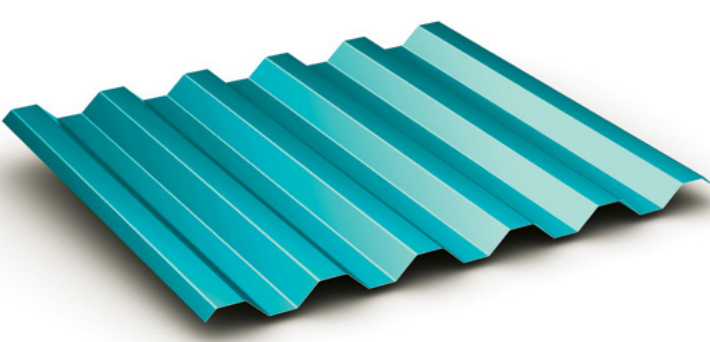
# TREMLOCK SHADOW RIB PANEL

TremLock Shadow Rib Panel is an exposed fastener wall panel that is designed so that fasteners are placed in the valleys, making them less visible.



# TREMLOCK 7.2 PANEL

TremLock 7.2 Panel provides optimum strength and spanning capabilities. It is equally well suited for industrial and commercial applications.



**Note:** The TremLock 7.2 Panel is also available with a 28.8" coverage, which is standard for 26 gauge panels. Please specify if 36" coverage is required.

**Details**

- Minimum slope: 1:12
- Tape sealant required on all slopes.
- Adelanto standard coverage for 26 gauge is 36" All other locations, standard 26 gauge coverage is 28.8" specify if 36" coverage is required
- Can be installed vertically or horizontally
- (narrow coverage)
  - Optional 26 gauge Galvalume (full coverage Adelanto only)
  - Optional 18 and 20 gauge (painted Galvalume) (limited availability)

**Testing Data**

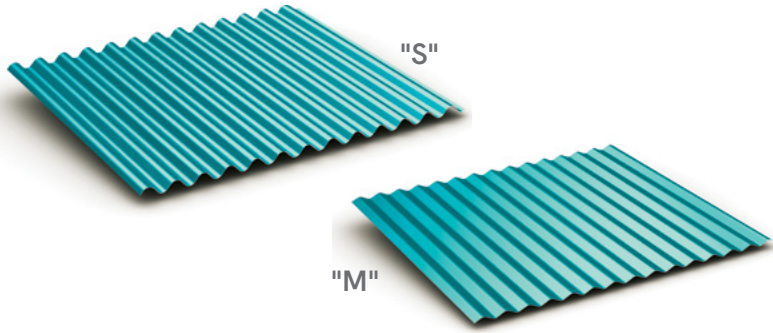
- Fire Rating: Class A
- Uplift Test: UL580 Class 90
- Air Infiltration: ASTM E1680
- Water Infiltration: ASTM E1646
- Class 4 Impact Resistance: UL2218
- Florida State Approval
- Fire Resistance UL 263
- Miami Dade Approval

**Panel Options**

- Coating: Kynar 500® (PVDF)
- Substrate:
  - Standard 24 gauge Galvalume®
  - Optional 22 gauge Galvalume
  - Optional 26 gauge Galvalume

# TREMLOCK "S" PANEL AND TREMLOCK "M" PANEL

TremLock's corrugated panels were designed and engineered with greater-than-normal spans and load-carrying characteristics in mind. And, they quickly communicate their high-strength performance capabilities. TremLock "S" Panel and TremLock "M" Panels are similar in design, with TremLock "M" Panel offering a more subtle rib height and configuration.



**TremLock "S" Panel**



**TremLock "M" Panel**



**Details**

- TremLock "S" Panel minimum slope: 1:12
- TremLock "M" Panel minimum slope: 1:12
- Tape Sealant required on all slopes.
- TremLock "S" Panel and Tremlock "M" Panel can be installed over solid deck or open framing
- Substrate:
  - Standard 26 gauge Galvalume
  - TremLock "S" Panel is also available in 24 gauge Galvalume
  - TremLock "M" Panel is also available in 29 gauge Galvalume

**Testing Data**

- Fire Rating: Class A
- Uplift Test: UL580 Class 90 (TremLock "S" Panel only)
- Class 4 Impact Resistance: UL 2218
- Florida State Approval (TremLock "S" Panel only)

**Panel Options**

- Coating:
  - Kynar 500® (PVDF)
  - Silicone Modified Polyester (SMP)

TremLock "S" Panel and TremLock "M" Panel are produced in Bossier City, LA.



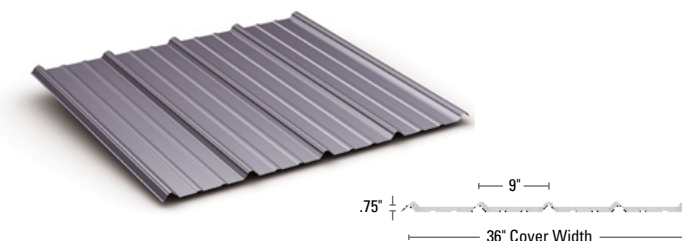


# EXPOSED FASTENER PANELS



## TREMLOCK ULTRA-RIB PANEL

The TremLock Ultra-Rib Panel is a low profile 3/4" panel that is well suited for post frame, commercial, and residential applications.



### Details

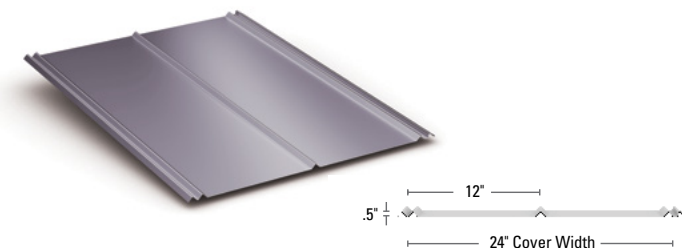
- Minimum slope: 1:12 (with sealant)
- 3:12 slope required without sealant
- Also available with Moisture-Lok

### Testing Data

- Fire Rating: Class A
- Uplift Test: UL580 Class 90
- Class 4 Impact Resistance: UL 2218
- Florida State Approval
- Fire Resistance UL 263

## TREMLOCK 5V-CRIMP

Homeowners across the country are discovering that metal roofing not only adds both value and beauty to thier homes. TremLock's 5V Crimp panel incorporates a classic design that will make any residential or commercial project more attractive.



### Details

- Minimum slope: 3:12 with sealant

### Testing Data

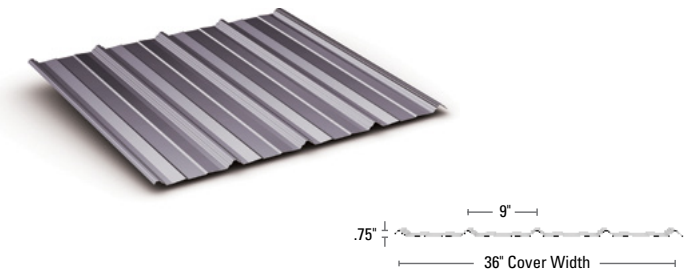
- Fire Rating: Class A

- Uplift Test: UL580 Class 90
- Class 4 Impact Resistance: UL 2218
- Florida State Approval: 1832.1
- Fire resistance: UL263
- Miami Dade Approval

5V-Crimp is produced in Ashburn, GA.

## TREMLOCK INVISA-LAP PANEL

The TremLock Invisa-Lap Panel features a protected panel that features a nearly invisible lap. Designed for post frame and residential applications, The TremLock Invisa-Lap Panel will add beauty to any project.



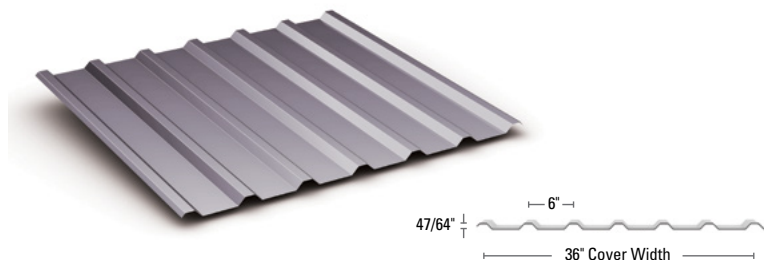
### Details

- Minimum slope: 1:12 (with sealant)
- 3:12 slope required without sealant
- Patent and copyright protected

- Nearly invisible lap
- Ideal for post frame structures and residential roofing
- Also available with Moisture-Lok

## TREMLOCK "U" PANEL

The TremLock "U" Panel is an exposed fastener wall and roof panel that is also used extensively as a liner or partition panel.



**Note:** Also available, TremLock "U" Panel with non-purlin bearing leg

### Details

- Minimum slope: 2:12 with sealant

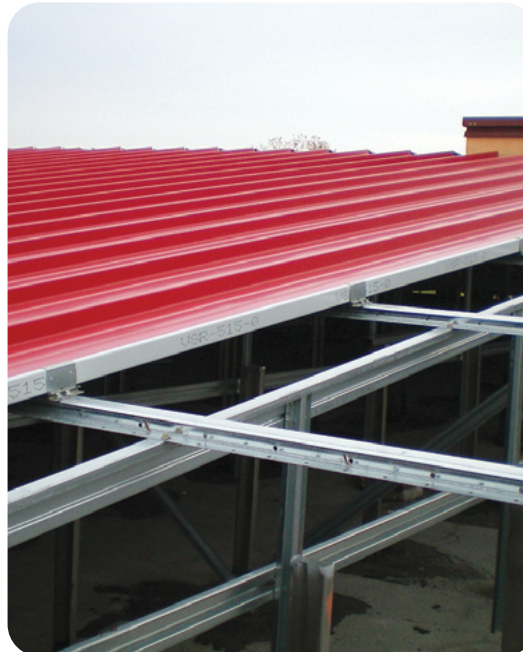
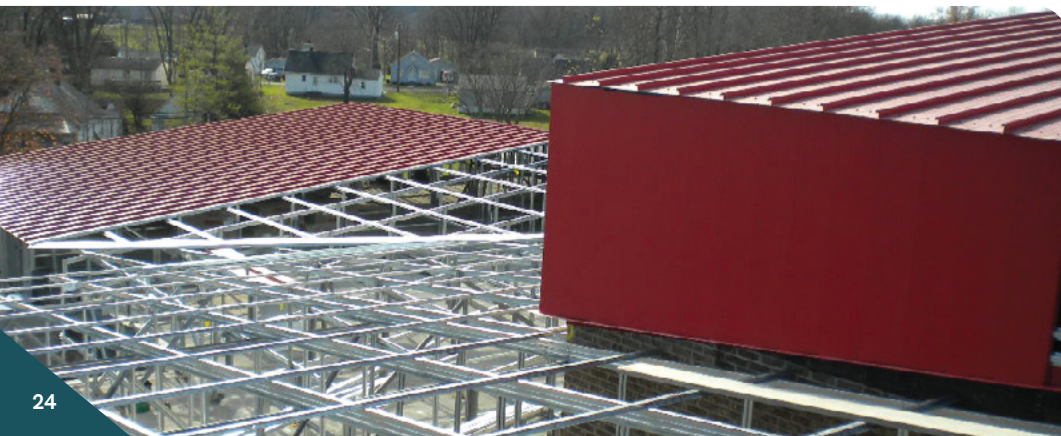
### Testing Data

- Fire Rating: Class A

- Uplift Test: UL580 Class 90
- Class 4 Impact Resistance: UL 2218
- Florida State Approval
- Fire resistance: UL263



# RETROFIT SYSTEMS



## SLOPE FRAMING SYSTEM

Tremco Roofing has the optimal solution for building owners, architects and contractors who desire a high performance, long-term solution for worn-out conventional roofs. TremLock Metal Retrofit Roofing Systems provide an extended service life and reduced life-cycle costs. In many cases, the cost difference between a conventional roof tear-off and replacement compared to a retrofit metal roof system is a return on investment which can be recovered in a short period of time.

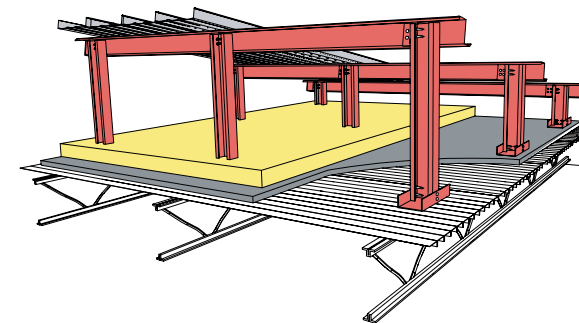
### Building Owner Benefits

- Decades-long service life
- Reduced maintenance
- Energy savings through reduced consumption
- Aids in LEED™ certification
- Increases wind and snow storm resistance
- Possible reduction of insurance premiums
- Improves appreciable value of your building

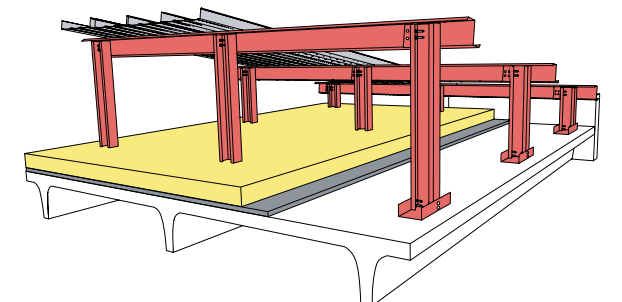
### The Contractor's Advantages

- Easy to erect framing systems
- Proven and tested standing seam metal roofing systems
- Quicker than normal turn-around times
- Reduces landfill expenses for disposal of existing materials

TremLock Metal Retrofit Roofing Systems are engineered to adapt to the existing roof's structural support system whether constructed of steel, concrete or wood.



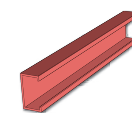
Adaptation to Steel



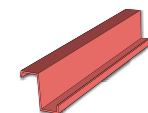
Adaptation to Concrete

## SUBSTRUCTURAL COMPONENTS

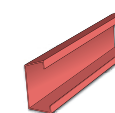
TremLock's substructural components - Cees, Zees, Hats, Channels, Angles - represent the broadest selection of cold-formed substructural components in the industry.



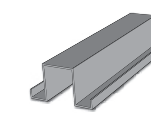
CEE



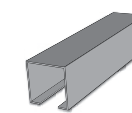
ZEE



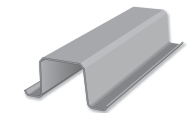
EAVE STRUT



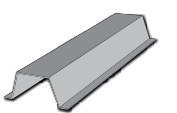
HAT



CHANNEL



MAC-GIRT



SUB-GIRT

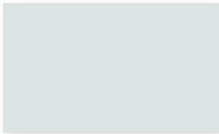
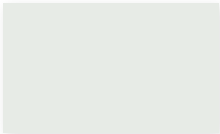

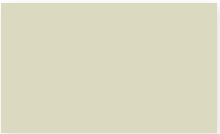

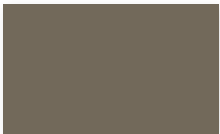

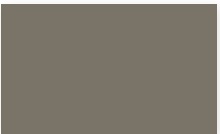












Cee, Zee, and Eave Strut are available in 12, 14, and 16 gauge.

Hat, Channel, Mac-Girt, and Sub-Girt are available in 16, 18, and 20 gauge.



# COLOR SOLUTIONS

### Standard Colors

 Regal White R: 0.68 E: 0.86 SRI: 82	 Bone White R: 0.71 E: 0.85 SRI: 86	 Surrey Beige R: 0.40 E: 0.86 SRI: 43	 Sandstone R: 0.54 E: 0.85 SRI: 63
 Almond R: 0.60 E: 0.84 SRI: 70	 Buckskin R: 0.38 E: 0.86 SRI: 41	 Ash Gray R: 0.39 E: 0.84 SRI: 41	 Slate Gray R: 0.43 E: 0.85 SRI: 47
 Charcoal R: 0.32 E: 0.85 SRI: 32	 Matte Black R: 0.27 E: 0.86 SRI: 26	 Medium Bronze R: 0.30 E: 0.87 SRI: 31	 Dark Bronze R: 0.26 E: 0.84 SRI: 24
 Patina Green R: 0.46 E: 0.85 SRI: 51	 Evergreen R: 0.26 E: 0.84 SRI: 24	 Mansard Brown R: 0.30 E: 0.85 SRI: 30	 Colonial Red R: 0.33 E: 0.85 SRI: 34
 Roman Blue R: 0.26 E: 0.85 SRI: 24	 Patrician Bronze R: 0.27 E: 0.86 SRI: 26	 Terra Cotta R: 0.35 E: 0.85 SRI: 36	 Galvalume Plus

### Metallic Colors

Additional cost will apply.

 Prewathered Galvalume R: 0.30 E: 0.79 SRI: 27	 Leadcoat R: 0.37 E: 0.82 SRI: 38	 Silver Metallic R: 0.57 E: 0.78 SRI: 64
 Copper Penny Metallic R: 0.49 E: 0.85 SRI: 55	 Texas Silver Metallic R: 0.58 E: 0.78 SRI: 66	 Champagne Metallic R: 0.38 E: 0.80 SRI: 38

### Premium Colors

Additional cost will apply.

 Regal Blue R: 0.26 E: 0.85 SRI: 24	 Brite Red R: 0.42 E: 0.84 SRI: 45
 Hartford Green R: 0.25 E: 0.85 SRI: 23	 Brandywine R: 0.26 E: 0.85 SRI: 24

ALL COLORS ARE REPRESENTATIVE OF COLORS OFFERED AND ARE NOT INTENDED FOR MATCHING PURPOSES. BEFORE PLACING AN ORDER, PLEASE REQUEST AN ACTUAL COLOR SAMPLE.

### TremLock Metal Roof / Wall Panels / Flat Stock

Tremco Roofing and Building Maintenance can help you create sustainable projects. All profiles are made from recycled steel and are offered in a full spectrum of energy saving cool colors. Contact your local Tremco Roofing sales representative for more information.

COLOR	INVENTORY				
	SUNNYVALE, TEXAS	CLINTON, ILLINOIS	PEACHTREE CITY, GEORGIA	ADELANTO, CALIFORNIA	HOUSTON, TEXAS
ALMOND	✓	✓			
ASH GRAY	✓	✓	✓	✓	✓
BONE WHITE	✓	✓	✓	✓	✓
BRANDYWINE	✓	✓	✓		✓
BRITE RED	✓	✓	✓	✓	✓
BUCKSKIN	✓	✓			✓
CHAMPAGNE METALLIC	✓				✓
CHARCOAL	✓	✓	✓	✓	✓
COLONIAL RED	✓	✓	✓	✓	✓
COPPER PENNY METALLIC	✓	✓	✓	✓	✓
DARK BRONZE	✓	✓	✓	✓	✓
EVERGREEN	✓	✓	✓	✓	✓
GALVALUME PLUS	✓	✓	✓	✓	✓
HARTFORD GREEN	✓	✓	✓	✓	✓
LEADCOAT	✓				✓
MANSARD BROWN	✓	✓	✓	✓	✓
MATTE BLACK	✓	✓	✓	✓	✓
MEDIUM BRONZE	✓	✓	✓	✓	✓
PATINA GREEN	✓	✓	✓	✓	✓
PATRICIAN BRONZE	✓	✓	✓	✓	✓
PREWEATHERED GALVALUME	✓				✓
REGAL BLUE	✓	✓	✓	✓	✓
REGAL WHITE	✓	✓	✓	✓	✓
ROMAN BLUE	✓	✓	✓	✓	✓
SANDSTONE	✓	✓	✓	✓	✓
SILVER METALLIC		✓	✓		
SLATE GRAY	✓	✓	✓	✓	✓
SURREY BEIGE		✓	✓	✓	✓
TERRA COTTA	✓	✓			✓
TEXAS SILVER METALLIC	✓				✓

\* ALL INVENTORY SHOWN IS 24 GAUGE GALVALUME MASTER COIL. OTHER GAUGES AND SUBSTRATES ARE AVAILABLE AND INVENTORY VARIES BY LOCATION. PLEASE INQUIRE FOR SPECIFIC INVENTORY AVAILABILITY AND FREIGHT RATES.