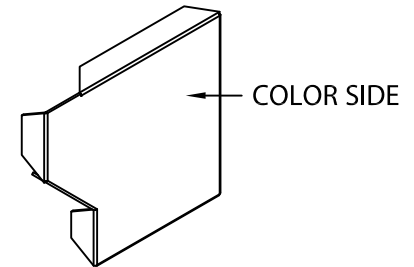
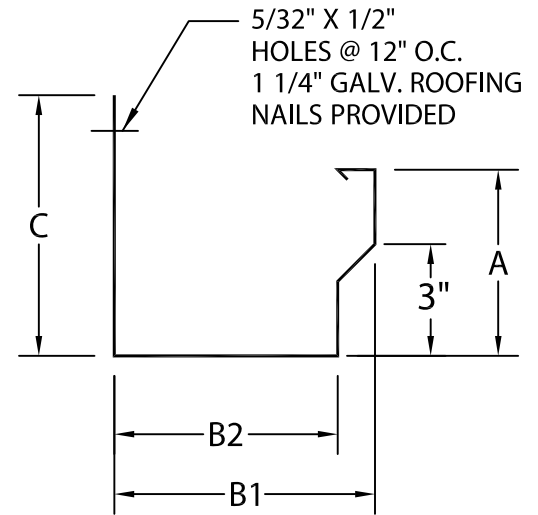
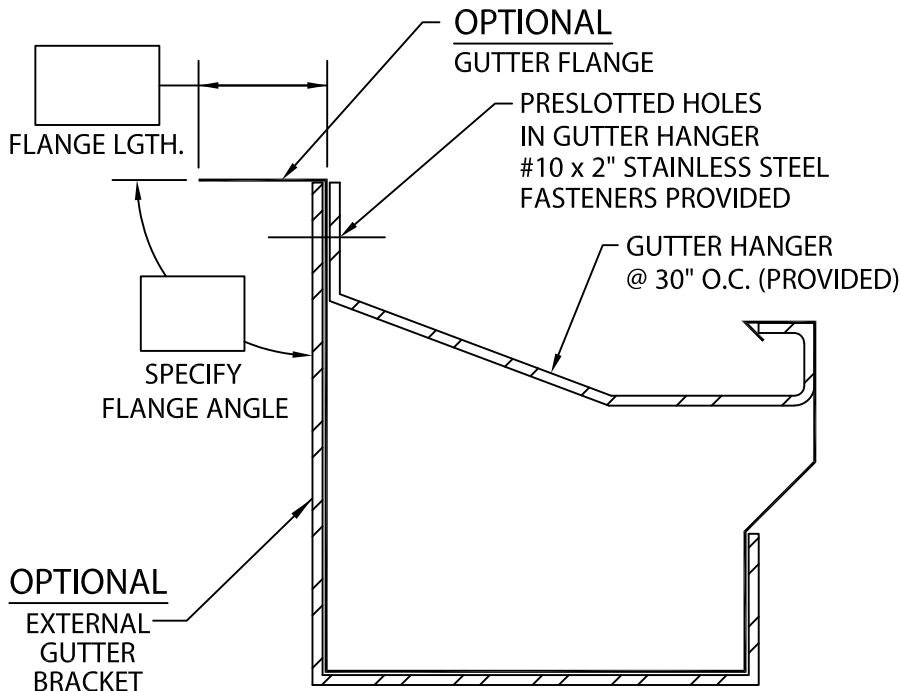




# TREMLOCK GUTTER

IG-1 VERSION



ENDCAP DETAIL  
(LEFT HAND SHOWN)

PRODUCT ID #	C	B1	B2	A	HANGER
<input type="checkbox"/> IG1-C6	6"	4 3/4"	3 3/4"	4 1/2"	1 1/4" X .100 Mill
<input type="checkbox"/> IG1-C7	7"	6"	5"	6"	1 1/4" X .100 Mill
<input type="checkbox"/> IG1-C8	8"	7"	6"	7"	2" X .100 Mill
<input type="checkbox"/> IG1-C9	9"	8"	7"	8"	2" X .100 Mill

## NOTES:

- MAXIMUM DOWNSPOUT DIMENSION NOT TO EXCEED "B2" MINUS 9/16".
- 2" LAP JOINTS PROVIDED.
- 1/8" STAINLESS STEEL POP RIVETS PROVIDED.
- UNLESS OTHERWISE NOTED, FABRICATION OF MITERS ARE FURNISHED STANDARD UTILIZING A NON-PENETRATING QUICKLOCK JOINT, THEN FACTORY SEALED WATERTIGHT.
- WELDED ACCESSORIES REQUIRE A MINIMUM MATERIAL THICKNESS OF .050".

Fabrication will proceed only after receipt of signed print approval.

## Print Approval:

Architect and/or contractor shall verify all dimensions, sizes and quantities. All products to be installed in strict accordance with Tremco's printed instructions.

Approved by: \_\_\_\_\_

Date: \_\_\_\_\_

## MATERIAL:

\_\_\_\_ 24 GA. GALVANIZED STEEL  
\_\_\_\_ .040" ALUMIINUM COLOR: \_\_\_\_\_  
\_\_\_\_ .050" ALUMINUM FINISH: \_\_\_\_\_  
\_\_\_\_ .063" ALUMINUM  
\_\_\_\_ OTHER \_\_\_\_\_

## QUANTITIES:

\_\_\_\_ LINEAL FEET 12'-0" LENGTHS  
\_\_\_\_ OUTSIDE MITERS @ 90°  
\_\_\_\_ INSIDE MITERS @ 90°  
\_\_\_\_ ENDCAPS: RIGHT \_\_\_\_\_ LEFT \_\_\_\_\_  
\_\_\_\_ EXPANSION JOINTS  
STYLE "1" \_\_\_\_\_ STYLE "2" \_\_\_\_\_

SPECIFY  
MITER TYPE:  
☐ WELDED  
☐ QUICKLOCK

FOR EXTERNAL GUTTER BRACKETS SEE PRINT APPROVAL #60012-29560  
FOR NON-90 MITERS SEE PRINT APPROVAL #60012-29559

PROJECT:

ARCHITECT:

ROOFING CONTRACTOR:

REPRESENTATIVE/DISTRIBUTOR:

TREMCO ROOFING AND BUILDING MAINTENANCE  
3735 GREEN RD; BEACHWOOD, OH 44122  
PHONE: 262-953-2666  
EDGESYSTEMS@TREMCOINC.COM  
WWW.TREMCOROOFING.COM

**TREMCO**  
ROOFING & BUILDING MAINTENANCE

DATE: 08/24/18

DRN BY: JJC

CKD BY: SAK

SHT.# \_\_\_\_\_ OF \_\_\_\_\_

DWG# 60012-29564

A