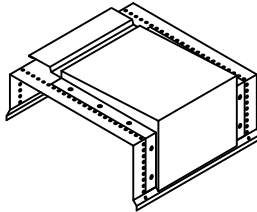
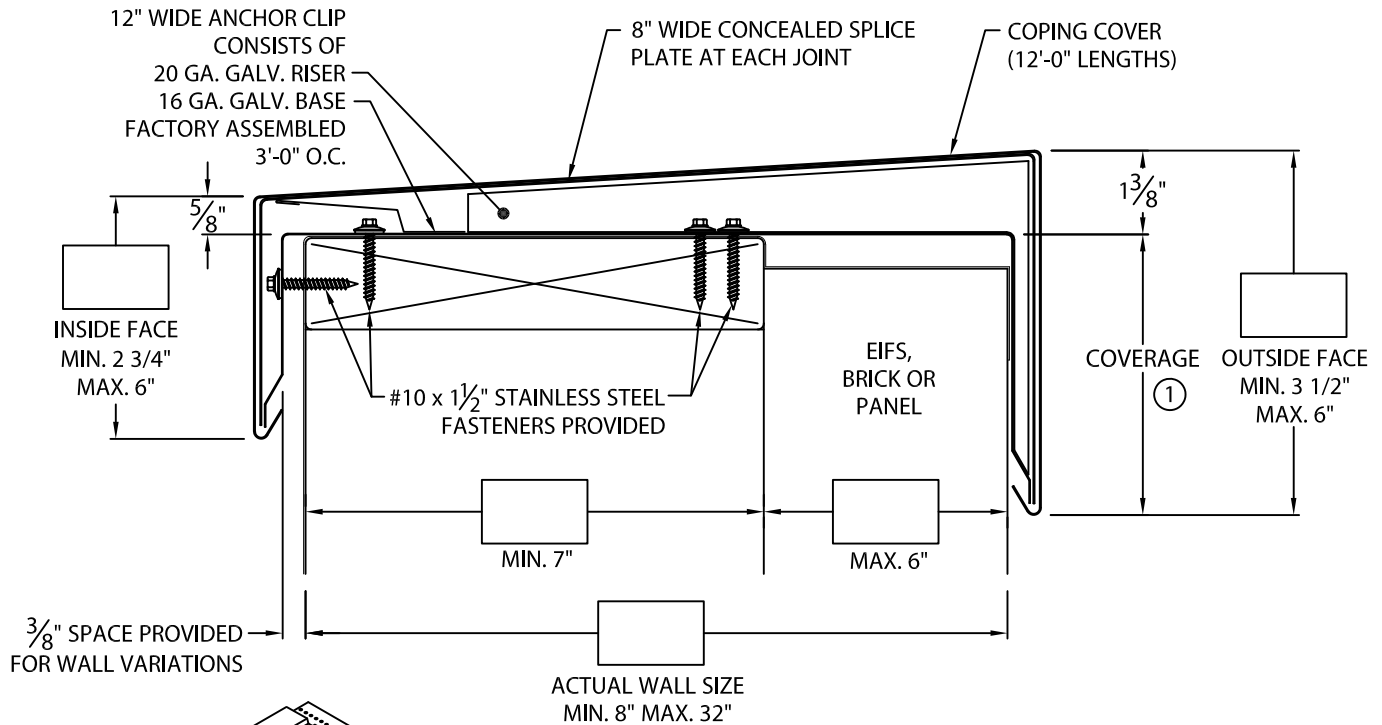


TREMLOCK TRAVERSE COPING

SINGLE SIDE SPACE 6" OR LESS, OUTSIDE FACE 3 1/2" TO 6" VERSION



ANCHOR CLIP DETAIL

NOTES:

- ① FACE = COVERAGE (SHOULD EXTEND A MIN. OF 1" BELOW WATERPROOFING MEMBRANE) + 1 3/8".
- ② 24 GA. GALV. AND .040" ALUM. COPING COVERS AVAILABLE FOR WALL SIZES 8" TO 24" ONLY.
- ③ WELDED ACCESSORIES REQUIRE A MINIMUM MATERIAL THICKNESS OF .050".
- ④ FOR NON 90° MITERS PLEASE USE PRINT APPROVAL #60011-29132.

AUTHORIZED SIGNATURE:

APPROVED BY: _____

DATE: _____

ANSI/SPRI ES-1 TESTED

U.S. PATENT # 8,978,317 B1

MATERIAL:

___ 24 GA. GALVANIZED STEEL ②
___ 22 GA. GALVANIZED STEEL
___ .040" ALUMINUM ②
___ .050" ALUMINUM
___ .063" ALUMINUM
___ OTHER _____

COLOR: _____
FINISH: _____

QUANTITIES:

_____ LINEAL FEET 12'-0" LENGTHS

ACCESSORIES:

___ OUTSIDE MITERS @ 90° ④
___ INSIDE MITERS @ 90° ④
___ RIGHT ENDCAPS
___ LEFT ENDCAPS
___ RIGHT ENDWALL (COPING VERSION)
___ LEFT ENDWALL (COPING VERSION)
___ RIGHT ENDWALL (SPlice PLATE VERSION)
___ LEFT ENDWALL (SPlice PLATE VERSION)

SPECIFY
ACCESSORY TYPE:

☐ WELDED ③
☐ QUICKLOCK

PROJECT:

ARCHITECT:

ROOFING CONTRACTOR:

REPRESENTATIVE/DISTRIBUTOR:

TREMCO ROOFING AND BUILDING MAINTENANCE
3735 GREEN RD; BEACHWOOD, OH 44122

PHONE: 262-953-2666
EDGESYSTEMS@TREMCOINC.COM
WWW.TREMCOROOFING.COM

DATE: 07/19/18

DRN BY: JJC

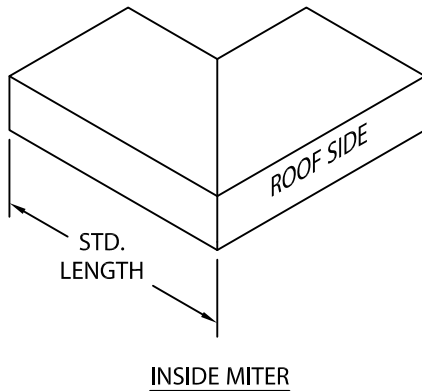
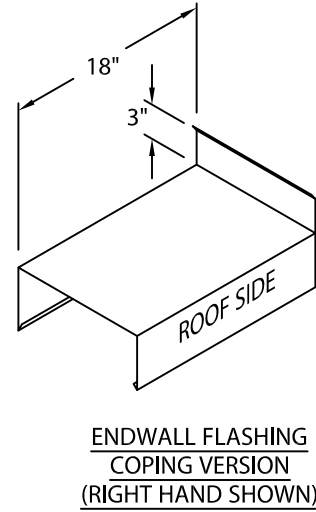
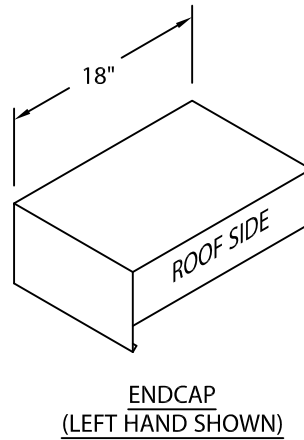
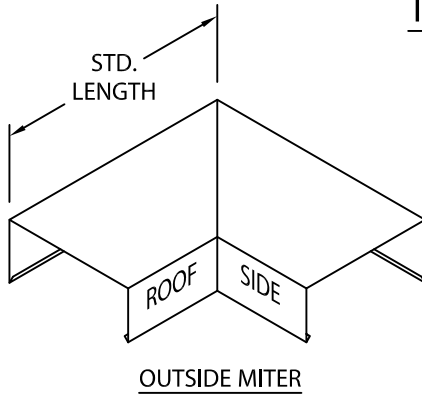
CKD BY: SAK

SHT.# ____ OF ____

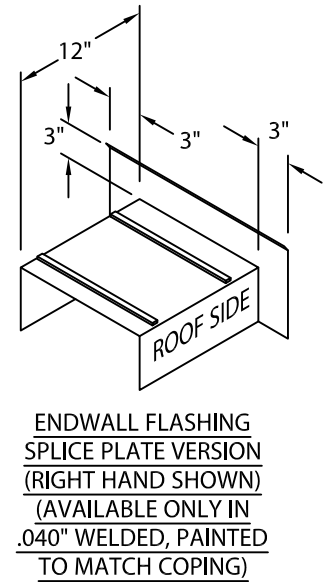
DWG# 60011-29268

A

TREMLOCK TRAVERSE COPING
STANDARD ACCESSORIES



MITER STANDARD LEG LENGTH:
WALL SIZE + $9\frac{5}{8}"$ = LENGTH



ADDITIONAL ACCESSORIES ARE AVAILABLE ON WEBSITE:

TRANSITION MITERS
STRAIGHT TRANSITION MITERS
"T" MITERS
"Z" MITERS
STEP-UP MITERS
PEAK / VALLEY MITERS
PILASTER CAPS
RADIUS COPING
ARCHED COPING

(FOR ADDITIONAL ACCESSORY REQUIREMENTS, ATTACH SKETCHES OR CALL MANUFACTURER FOR ASSISTANCE).